

Executive Overview



CONTENTS

- 03 Introduction
- 04 MIS solutions for print
- 06 Markets
- 16 Application map
- 18 Product application
- 20 Sales effectiveness
- 22 More quotes = more business
- 24 Planning for success
- 26 Capture data / control costs
- 28 Reduce your paper costs
- 30 Get in touch

Over the last 15 years we have seen a huge change in our core markets. We listen to our customers and are continually looking to help them improve many aspects of their companies in these changing and challenging times.

My commitment to our customers is to continuously improve our products and keep them appropriate and effective in order to ensure that they have every business advantage available to them.

I am proud of our incredible team of enthusiastic and driven people. We are developing new products with technology we could only have dreamed of when we started, including the amazing new iTechnique App.

Paul Cooper

CEO

MIS solutions for print

ABOUT TECHNIQUE

Technique customers are some of the world's most successful publication, commercial and direct marketing print companies, across more than 20 countries and 4 continents.

The company was established in the UK in 1995 and is a leading provider of ERP / MIS software solutions to the printing industry. Today, Technique also has offices in Chicago and is represented in Spain and the UAE.

Technique has a significant advantage as our products and services have been developed in close consultation with end users in major printing companies.

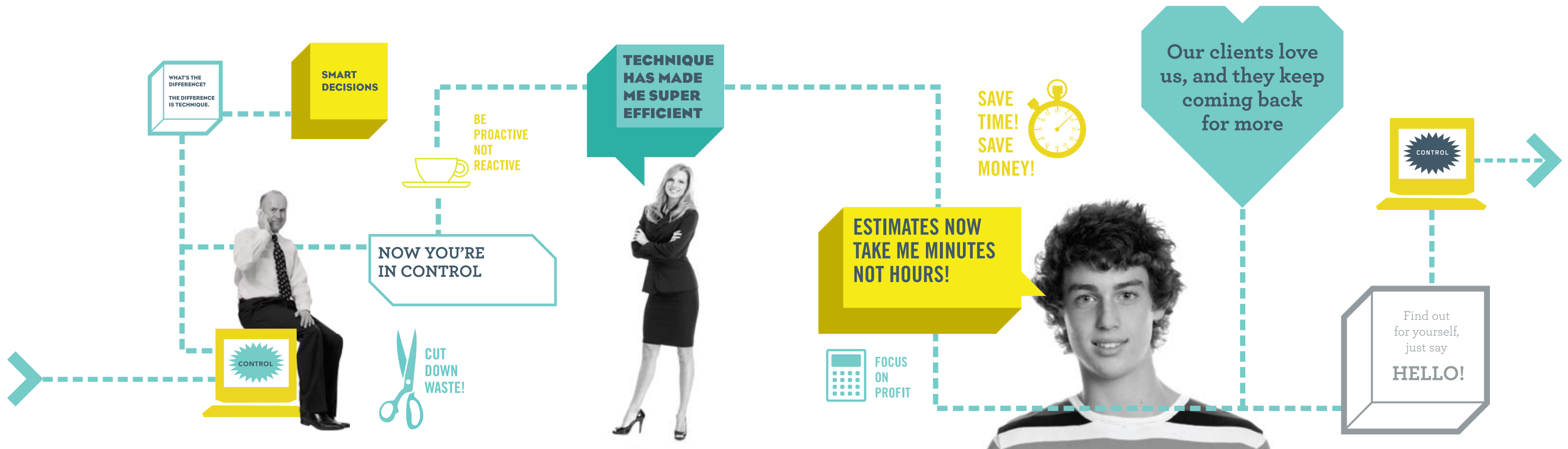
This is further strengthened by our policy of employing professionals from the printing industry with a wealth of experience who understand both IT systems and best practices in print.

Technique makes printers more effective and profitable: automating processes and eliminating waste. The system is easy to use and quick to implement.

All the applications are multi-site, multilingual, and multi-currency.

A modular approach allows users to select only the appropriate components for their type of business, and then integrate them with existing business systems to deliver a complete, focused and effective MIS solution.

Technique products are JDF certified and have won a CIPPI award for best process automation improvement.



Books

Book manufacturing is one of the markets where the standard Technique products have been specifically developed to solve problems and improve productivity.

ADVANTAGES

Some example benefits within book production:

- > Significant increase in quotations
- > Increased capacity utilization
- > Highly automated waste control
- > Easy management of complex pricing schedules

ESTIMATING

Important aspects of book Estimating include the handling of materials and the number of finishing operations. Materials consumed through the various finishing processes such as cloth, foils, laminates, end boards can all be automatically and quickly calculated.

The Estimating system allows the entire book production process to be structured, templated, viewed and manipulated graphically. A graphical representation is critical when dealing with complex manufacturing processes such as book finishing. Automatic calculation of bindery spoilage at every part of the manufacturing process ensures the correct number of press sheets avoiding costly mistakes.

Enquiry forms can be designed for specific product groups ensuring sales people have a quick and simple way to submit essential information to Estimating. By reducing administration and misunderstandings, quotations can be generated faster and with greater accuracy.

The ability to template a complex manufacturing process, allows quotes that previously took hours to be produced in just a few minutes.

PRODUCTION SCHEDULING

The Scheduling tool allows manipulation of the production plan at section level and 'whole job' level; particularly useful in book manufacturing where there are a significant number of components to handle.

Simple and effective Scheduling provides opportunities to improve utilization and reduce costs.

AUTO SCHEDULING

Used in scenarios where large numbers of components are being produced. Optimizes the schedule for the best flow of jobs through production, allowing complex jobs to be planned easily.

DATA COLLECTION

The Shop Floor Data Collection systems will automatically start new jobs / sections on zero make ready web presses. This high level of automation reduces errors and administration.

Data Collection supports equipment that is capable of running separate jobs concurrently, such as perfect binders, ensuring all production information and job costs are recorded accurately.

EQUIPMENT COVERED

- > Heatset web
- > Sheet-fed
- > Digital
- > Perfect binding
- > Case making
- > Case binding
- > Thread sewing
- > Various book finishing resources

e.g.

- > Foil blocking
- > Embossing
- > Dust jackets

EXAMPLE CUSTOMERS

Bang Printing (US)

CPI Mackays (UK)

PMP Griffin (Australia)



Magazines & Catalogs

The solutions from Technique were originally developed for magazine and catalog production environments.

ADVANTAGES

Some example benefits within magazine production:

- > Comprehensive and flexible contract pricing
- > Strong version control (down to page-level)
- > Fast invoicing

ESTIMATING

Dealing with high page counts in magazines, catalogues and directories is a breeze. High page counts are instantly split into production signatures and gives a clear indication of the most cost effective production route across all press types, including gravure.

CONTRACT MANAGEMENT

Virtually all magazine printing is priced according to long-term contracts. Technique MIS provides comprehensive control over how jobs are priced.

This includes all press, binding, paper, prepress, ink and ancillary items. Contracts can be configured for specific date and quantity ranges. Regardless of how the job is manufactured, it will always be billed according to the contract.

Once contracts are produced, a CSR or a customer (via a web browser) can create an order from a contract. The system automatically checks that contract pricing is defined for the chosen product specification.

By allowing customers to select their own product configuration via the web for a specific issue, they can produce their own what-if scenarios with immediate pricing. This not only saves a great deal of CSR time, but allows the customer to order the maximum quantity that their budget allows.

ORDER MANAGEMENT

Technique's highly visual and highly intuitive order management application allows very fast creation of new issues. From here CSRs can specify comprehensive print and bindery versioning (down to the page level). Once the job specifications are finalized, extremely content rich job tickets can be produced at the click of a button.

PRODUCTION SCHEDULING

The Scheduling tool allows forward planning of future issues of contracted jobs. The powerful what-if scenarios allow management to see the capacity and financial implications of adding new contracts and/or equipment.

DATA COLLECTION

The Shop Floor Data Collection systems allow accurate capture of job costing and performance data in real-time. Job status and expected completion are fed back to the schedule in real time, and any pallets produced are automatically tracked in the Technique Inventory Management system. This allows CSRs and customers (with permission) to see the real-time status of the schedule and finished goods.

EQUIPMENT COVERED

- > Gravure
- > Heatset web
- > Coldset web
- > Sheet-fed
- > Digital
- > Perfect binding
- > Saddle stitching
- > Many types of finishing resources

EXAMPLE CUSTOMERS

AIW (Australia)
Polestar Group (UK)
Creel Printing (USA)



Commercial Printing

Whether printing business cards, flyers, leaflets or brochures, Technique Commercial Estimating has a solution for you.

ADVANTAGES

Some example benefits within commercial print production:

- > Fast and accurate calculation of time and materials
- > Control over ganging, passes and workstyle including perfecting units
- > Support for sheet-fed and digital processes both cut sheet and reel web

ESTIMATING

The diverse world of commercial print requires a system that is easy to use and highly automated. Using an open (or flat) size, the system can instantly determine the most cost effective number up from all your standard sheet sizes based on quantity to be run. Combined with the ability to reduce make ready waste by using custom sheet sizes or pre-cut sheets for small quantities, the Technique Estimating solution for Commercial Print delivers instant benefit and cost savings.

If multiple products on the same stock are required then the estimator has the option to gang them together. A rich drag and drop interface helps the estimator maximize each sheet and reduce waste.

A whole host of in-line and off-line materials such as lacquer and varnish can be quickly applied together with any type of finishing, such as cutting, folding, stitching, punching, drilling, coil binding, gluing and handwork etc.

For larger runs, Technique Estimating supports roll-fed digital and sheet-fed processes including perfecting. All possibilities are automatically calculated and the most cost effective option highlighted to the estimator.

Enquiry forms can be designed for specific product Groups, ensuring sales people have a quick and simple way to submit essential information to Estimating. By reducing administration and misunderstanding, quotations can be generated faster and with greater accuracy.

FULFILLMENT

The Fulfillment module provides a browser interface for customers to view their managed inventory. A full range of inventory transactions including ship, replenish, back order, pick list and kit creation are available. Customer websites/portals can be branded thereby providing a familiar look and feel for your clients. The Fulfillment module is completely integrated with the rest of Technique MIS including Order Management and Inventory.

EQUIPMENT COVERED

- > Heatset web
- > Coldset web
- > Sheet-fed
- > Digital
- > Many types of finishing resources

EXAMPLE CUSTOMERS

Eclipse Colour Print (UK)
Kempenfelt Graphics (Canada)
Midstates Printing (US)



Direct Marketing

In the fast-paced and complex arena of Direct Marketing, accurate estimating and quick job processing are key to making jobs cost effective. With Technique MIS you can meet these challenges while raising customer responsiveness to new levels.

ADVANTAGES

Some example benefits within Direct Marketing production:

- > Ability to quote from or include costs from pricing lists
- > Build and update complex finishing profiles
- > Support for multiple components within one quote or job

ESTIMATING

Within the Direct Marketing sector, complex finishing can be key to a job. Technique has developed a highly sophisticated estimating system that has the power and flexibility to handle even the most demanding requirements. It incorporates new features such as Outsource Procurement supporting true Business to Business communication with preferred suppliers via a Web Portal.

Technique's ability to hold many routes for the same product allows estimators to experiment with variations and present the most cost effective options to the customer. All aspects of the production routes are considered, and multi-version quotations can be easily generated.

Using the Technique Contract Management system you can account for all of your Data Processing needs from either a standard or client specific rate card.

The unique manufacturing process template within Technique Estimating allows complex finishing routes to be built using a highly intuitive graphical interface. Estimators can access a library of stored templates to be re-used as required. A further benefit is the ability for less experienced estimators to access and use this acquired expertise, elevating them to the standard of your best estimator.

Negate the need for time consuming quote production using Technique's pre-defined quotation formats.

Revisions to existing quotations are a breeze with Technique Estimating. Quantity changes and specification changes can be performed quickly and accurately within minutes.

PRODUCTION SCHEDULING

Direct Marketing commonly has a diverse mix of print components, whether in-house or supplied. Tracking all the components from initial receipt, through production to completion of the mailing pack has always remained a challenge. Technique provides a solution to this challenge by utilizing Event tracking to record all of the critical schedule information from data receipt dates, insert receipt dates through to the actual mailing date.

INVENTORY MANAGEMENT

Track all work in progress, supplied items such as flyers or cards and finished goods using Technique's Inventory module. All items are uniquely barcoded to help locate, move and consume during each production process.

FULFILLMENT

The Fulfillment module provides a browser interface for customers to view their managed inventory. A full range of inventory transactions including ship, replenish, back order, pick list and kit creation are available. Customer websites/portals can be branded thereby providing a familiar look and feel for your clients. The Fulfillment module is completely integrated with rest of Technique MIS including Order Management and Inventory.

EQUIPMENT COVERED

- > Heatset web (roll-to-roll)
- > Sheet-fed
- > Digital
- > Press inline finishing
- > Personalization
- > Enclosing

EXAMPLE CUSTOMERS

GI Solutions Group (UK)

Segerdahl Group (US)

The Lettershop Group (UK)



Newspaper

Newspaper and coldset product manufacturing is one of the markets where the standard Technique products have been specifically developed to solve problems and improve productivity.

ADVANTAGES

Some example benefits within newspaper production:

- > Fast and accurate calculation of time and multi-web materials
- > Visibility of constraints such as roll-stands and towers
- > Highly automated paper inventory processes
- > Integrated contract management

ESTIMATING

The Estimating system allows any number of webs to be defined and each web can be a different material and/or have a different color makeup. This allows precise control over the number of full color, two color and/or single color pages. Combined with the ability to collate and/or insert products in the bindery in either in-line or off-line mode makes a quick, highly accurate, all-encompassing estimating solution for the newspaper market.

Enquiry forms can be designed for specific product groups ensuring sales people have a quick and simple way to submit essential information to Estimating. By reducing administration and misunderstanding, quotations can be generated faster and with greater accuracy.

ORDER MANAGEMENT

The ability to view an imposed layout showing the pages per web and the colors running on each page ensures that customer service teams can instantly answer technical questions about adding additional full color pages and whether any additional cost is involved.

Daily and weekly newspaper production requires jobs to be created and manipulated quickly. Technique Order Management does exactly this by allowing jobs to be created from contract price lists and copied forward for months or years at a time. Each issue can be quickly modified to reflect changes in circulation figures, final page counts and versions.

PRODUCTION SCHEDULING

The Scheduling tool allows resource planning by folder. Additionally constraint planning of roll-stands and print towers ensures there are no conflicts in the schedule. Simple and effective Scheduling provides opportunities to improve utilization and reduce costs.

INVENTORY MANAGEMENT

Daily newspaper production consumes thousands of paper rolls every year. Managing inventory is a breeze with Electronic Data Interchange (EDI or papiNet) to automatically receive paper manifests from your supplier. Additionally with real-time WiFi enabled barcode scanners, paper can be moved and location tracked in the warehouse.

DATA COLLECTION/PAPER MONITORING

Whilst Data Collection is monitoring the folder for counts and waste, Paper Monitoring is calculating accurate paper usage at the roll-stand. Each data collection unit knows which roll-stands are being used on the job allowing accurate reporting of time, waste and material as well as yield per roll. As rolls are spliced or ended, inventory is automatically depleted and part rolls are automatically labeled with the remaining weight.

EQUIPMENT COVERED

- > Coldset web
- > Heatset web
- > Trimmers
- > Collators
- > Inserters
- > Saddle-stitching
- > Polybagging
- > Many types of finishing resources

EXAMPLE CUSTOMERS

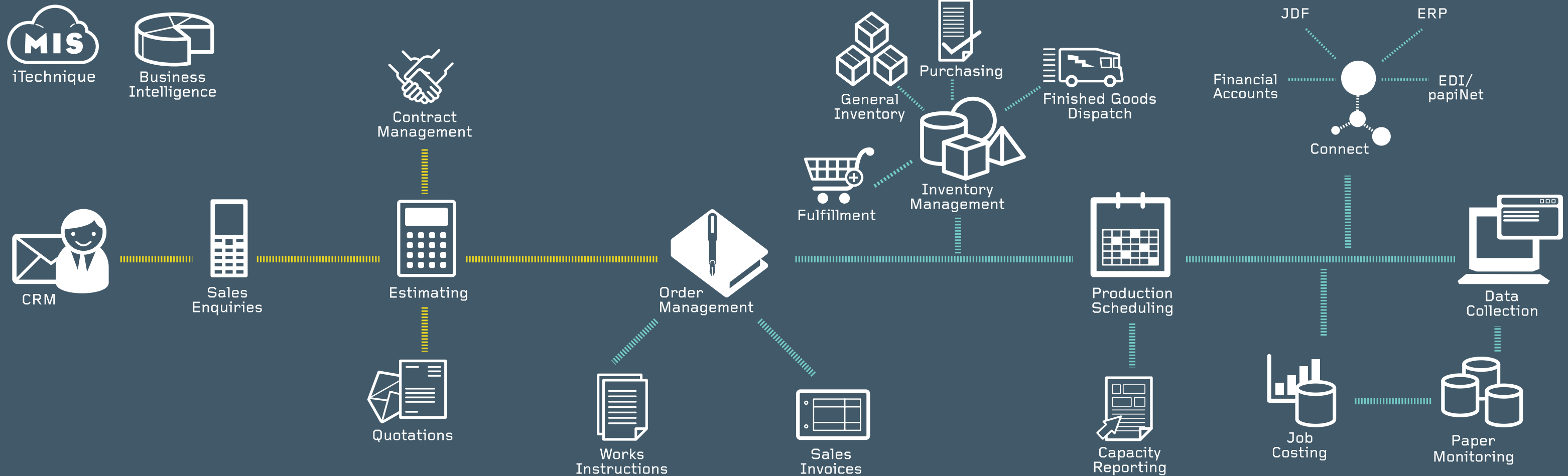
AFL Web (US)
Concentra Media (Belgium)
Editorial Prensa Ibérica (Spain)



Application Map

Technique offers a feature-rich set of modular products that encompass everything from web-based sales enquiries and ordering, to production scheduling and shop-floor data collection with sophisticated DMI.

Technique has a significant advantage as our products and services have been developed in close consultation with end users in major printing companies. This is further strengthened by our policy of employing professionals from the printing industry who understand both IT systems and print practices.



Product applications



CRM

Customer centric views of information including estimating and complaint management.

- > CRM Mobile
- > Complaints Management



iTechnique

Interactive mobile access across the entire Technique MIS suite for mobile Apple devices.

- > CRM
- > Sales Enquiries
- > Estimating
- > Production Scheduling
- > Orders
- > Data Collection
- > Business Intelligence



Sales Enquiries

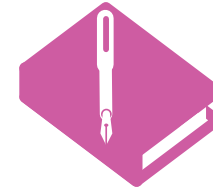
Incorporates quotation status, tracking and prioritization.



Estimating

A revolutionary system with a unique, route based calculation engine, dramatically improving the performance of a commercial department.

- > Contracts
- > Online quick Pricing
- > Online Contract Pricing
- > Contracts Forward Plan
- > Commissions
- > Outwork Procurement



Order Management

Processing order receipt, job detail and allocation where production routing can be assigned across the organizational structure.

- > Layout Control
- > Invoicing
- > Online-Order Tracking
- > JDF Generation
- > CSR Checklist
- > Dispatch Import



Inventory Management

Stock control system incorporating requisitions, authorizations, purchases, receipts and consumption of materials.

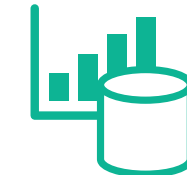
- > General Inventory
- > WIP / Finished Good / Dispatch
- > Inventory Scan
- > Fulfillment



Production Scheduling

Multi-dimensional graphical production scheduling with capacity analysis and key event/progress indicators as well as plan vs. actual display.

- > Event Tracking
- > Shop floor view
- > Online View
- > Auto Scheduling



Job Costing

Provides an integrated, standardized job costing system that facilitates costing and profit variance analysis.



Business Intelligence

Analytical reporting tools that allow quick, simplified access to key information on which to improve business performance.



Customer Portal

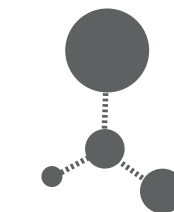
Quick, secure and easy access for customers to view the progress of quotations, inventory, create / update orders.



Data Collection

An integrated generic data collection system for all cost centers. Monitors job performance and helps reduce waste and downtime.

- > Advanced
- > Standard
- > Lite
- > Basic
- > Simple
- > Paper Monitoring
- > Planned Preventative Maintenance



Connect

A connectivity application for electronic integration with other systems. A number of specific adapters are available for individual information exchange.

- > Financial Adapter
- > JMF Adapter
- > XML Adapter

Sales effectiveness

What differentiates profit leaders from mainstream printers? In a phrase, Customer Service. Whatever the market sector and wherever in the world you look, the most profitable printers consider outstanding customer service to be an essential ingredient of their success.

HOW CAN TECHNIQUE MIS HELP?

We offer a fully integrated Customer Relationship Management solution that connects your sales and commercial staff with your customers and prospects. From any web browser, your customer-facing employees can securely access the information that helps differentiate you from your competitors.

Using the new Mobile CRM application, your remote staff will have all customer information literally in the palm of their hand and be able to respond quickly and knowledgeably to any customer request or instruction.

KEY BENEFITS

KNOWLEDGE IS POWER

Technique CRM delivers knowledge and understanding to those who need it most. Sales staff in particular will benefit from seeing the status of every quotation and job, the current production stage, anticipated delivery dates, missing components and outstanding customer actions all from their cell phone or mobile device.

With such high quality information, sales people can manage their customers (and themselves) more effectively with less reliance on sales support staff.

INSTANT PRICING

Our new mobile Quick Pricer lets customers and sales staff alike prepare reliable and incredibly accurate estimates (freeing your real estimators to concentrate on projects that demand their full attention). With Technique, you can harness the knowledge of your most seasoned estimator and share that expertise with the whole business. Within hours, your sales team will be preparing production-ready quotations that are as fast as they are accurate.

SHORTEN THE SALES CYCLE

With Technique CRM, you can dramatically condense the time and cost associated with processing quotes and orders. By removing so many manual (and costly) steps, we will help you secure more profitable business from the very first day of use and your customers will thank you for it! Even the most complex publication contracts can be managed online with simplicity and maximum flexibility.

CUSTOMER SERVICE - 24/7/365

Outstanding customer service does not respect your office hours: you have to work to the schedule of your customers and prospects and be ready to respond. Technique offers a secure and intuitive Customer Portal that connects your customers to the entire print production process so they see you as a trusted partner and not just another supplier. Like all of our applications, Customer Portal will make you more effective without the need for additional staff.

PLATFORM INDEPENDENT & SECURE

The mobile version of Technique CRM has been tested extensively on a wide variety of devices and platforms including NetBooks, iPad, iPhone, Blackberry, Palm, Windows Mobile and Google Android. If a device is lost or stolen, our proprietary security measures ensure that no sensitive data can fall into the wrong hands.



More
quotes
= more
business

With so much pressure on print budgets, it is critical that you offer your customer choices. Offering variations that suit your equipment as well as your customer's budget will generate more customer confidence and orders that are more profitable.

HOW CAN TECHNIQUE MIS HELP?

The Technique Estimating system intimately understands your production processes so even inexperienced estimators can generate complex, multi-option proposals in seconds and email them straight to the client, in any language or currency you choose.

The intelligence of Technique Estimating means that every quotation is 'production ready' whether the estimator realizes it or not.

KEY BENEFITS

ACCURACY IS EVERYTHING

Although speedy estimating will certainly win you more business, inaccurate estimating will just as certainly lose you money. Technique automatically calculates the most cost effective production routes in seconds and, if the specification should change at any time, a new price is automatically calculated.

GRAPHICAL ESTIMATING

We are delighted to announce the next generation of estimating applications, using graphics and intuitive logic to further streamline the estimating process. This brand new development graphically represents the workflow of the estimate: additional operations can be added, removed or re-ordered using drag & drop with immediate repricing. This unique method of estimating lends itself to complex production workflows such as books, direct mail and multi-version magazines & newspapers.

ONLINE RFQ

Our Request For Quote (RFQ) system lets customers and sales staff initiate the quoting process from any web browser. All submitted RFQ's are automatically absorbed into Technique saving your estimators time and reducing the potential for misunderstanding.

REALITY ESTIMATING

Most traditional estimating systems possess the same basic flaw: they allow a disconnect between production and estimating or, you might say, truth and fiction! Technique always displays current production data to estimators so routing decisions are based on true capacity and not guesswork.



Planning for success

No one can see the future and goodness knows, a printing factory is a fast-changing and highly unpredictable environment even at the best of times. With the right tools, there are many aspects of the manufacturing process that we can foresee and therefore, control.

HOW CAN TECHNIQUE MIS HELP?

The Technique Production Scheduling System provides a graphical representation of your entire operation, clearly illustrating spare capacity, bottlenecks, missing components and alternative resource options. Scheduling shows you what is happening right now and accurately predicts the immediate future so your planning decisions are fast, cost sensitive and extremely well informed.

KEY BENEFITS

UNIVERSALLY UNDERSTOOD GRAPHICS

In manufacturing plants, Gantt charts gained popularity because they were so easy to understand and provided an instant view of current and immediate future production status. Technique's Production Scheduling System harnesses the visual power of the Gantt chart and enhances it with the ability to rebuild the entire plan in seconds.

BUILD PRODUCTION PLANS FAST

As soon as you confirm an order within Technique, the production requirements are passed directly to your Production Scheduling System. Schedulers can see all planned equipment as well as critical events like data receipt, press checks, paper schedules and of course, dispatch dates.

Simply dragging & dropping a job on to the planning board will trigger an immediate re-assessment of all scheduled operations and clearly identify potential production problems or opportunities for greater efficiency.

SHARE THE KNOWLEDGE

Once you have a production plan, Technique distributes key information to your operators, your administrative staff, your customers and your suppliers. Whether it is a full schedule view for managers, a work-to-list for a machine operators or a list of missing content for your CSR's to chase, everyone understands they have a part to play.

EVERY PLAN WILL CHANGE

A print production facility is a volatile and fast-paced environment so it is crucial that any Production Control solution responds just as quickly.

Jobs over-running, damaged plates, machines break-downs and customers missing deadlines are just a few reasons why a plan is forced to change. Technique will instantly assess the new data to help you prepare new, cost-effective plans that keep disruption to an absolute minimum.

5-MINUTE PRODUCTION MEETINGS

You can save your departmental managers 100's of wasted hours every month simply by giving them production when, where and how they need it.

WHAT IF?

One of the most powerful features of our Production Scheduling software is the ability to experiment with production scenarios without affecting activities on the factory floor. This simple process can save you thousands in unnecessary overtime alone and provide a valuable tool for CSR's to negotiate delivery deadlines that are less disruptive.



Capture data / control costs

Knowing your true costs of production is the only way to effectively control, monitor and reduce them. With so much downward pressure on profit margins, it is no longer an option to understand your cost-base, it is the key to your very survival. Profit leaders in our industry, even in these challenging times, recognize this fact and generate 30-50% more profit margin than the average printer.

HOW CAN TECHNIQUE MIS HELP?

A fully integrated Technique MIS can provide a clear picture of where your costs are and how to control and reduce them. Technique is the global leader in Shop Floor solutions for the printing industry and our Data Capture Systems offer a powerful way to gather operational data that is consistently accurate and immensely important to your future profitability.

KEY BENEFITS

FINGER ON THE PULSE

The first benefit from using our Data Capture (DC) systems is the increased awareness of what is actually happening right now. Every machine and operator is accounted for and with just a glance you know whether they are producing chargeable work or engaged in less profitable activity. This productivity snapshot is invaluable to your departmental managers, and CSR's will benefit from outstanding job tracking capabilities.

TRUE DIRECT MACHINE INTERFACE

Technique's advanced DC equipment becomes an integral part of your press or other machine, connecting directly to the Programmable Logic Controller (PLC) and utilizing the available data including current status, gross/net counts, stop codes and downtime.

REMOTE CONTROL

Our flagship DC solutions can manage the behavior of your machines and contribute directly to your profitability. For example, stopping the press as soon as good copy count is reached will save time, improve efficiency and reduce wasted ink and paper. In addition, shutting down air compressors when not required will reduce your energy consumption and save thousands every year.

PAPER MONITORING

Our fully integrated solution includes Reelstand Monitoring to carefully track each individual roll as it moves through your business; from inventory to the press and back. Each roll is scanned and weighed so we can provide precise reports on true yield, slab waste and returned rolls with documentation provided at the roll ID level.

IT'S A TWO-WAY STREET

To improve the overall efficiency of your operations, our Data Capture Systems offer bidirectional data flow. In addition to gathering shop floor data for costing and scheduling purposes, we actively transmit critical production information to your shop floor operatives. Electronic job tickets, scheduling priorities, supporting documentation and pertinent reports are all available from the Data Capture units.

HARDWARE FLEXIBILITY

Whether you use state-of-the-art machinery with full JDF connectivity or 40 year-old workhorses that are on their nth million impression, Technique's Data Capture Systems will work for you. Most printers possess a combination of new and old equipment so our DC systems can be matched to the set-up of your shop floor.



Reduce your paper costs

Paper is the most important raw material in the entire printing process and the most expensive too. For some printers, paper represents as much as 60% of a job's cost and yet, very few have imposed real control on their purchasing, warehousing and consumption patterns.

HOW CAN TECHNIQUE MIS HELP?

The Technique Inventory Management System is a proven solution for printers of every shape or size. Whether digital, sheet-fed, web or a combination of all three, Technique MIS will ensure you purchase only what you need, improve inventory turnover, manage your suppliers more effectively and coordinate receipts with production.

KEY BENEFITS

IF YOU DON'T NEED IT, DON'T BUY IT

Under-running jobs is costly in terms of customer confidence and a slim profit margin will be wiped out completely if you have to reprint or credit your customer for the shortfall.

With Technique MIS, all your make ready requirements are accurately calculated throughout the entire production cycle so you can buy exactly what you need with absolute confidence. As you change presses, quantities or finishing processes, paper requirements are recalculated and you can see immediately how it should affect your purchasing decisions and allocation.

USE EXISTING INVENTORY FIRST

If you hold excessive inventory, Technique MIS can see exactly what materials you are holding and allocate them to jobs where appropriate. The simple act of allocating legacy stock for make-readies can cut your annual paper costs significantly, dramatically increase the rate of inventory turnover and bolster your profit margins.

SUPPLY CHAIN MANAGEMENT

Our Inventory Management System lets you manage your vendor relationships in a positive and effective way, holding them accountable where appropriate. If the supplier falls below agreed service or quality levels, Technique will supply the forensic documentary evidence you need to explain your position to the vendor.

This kind of professional partnership has a hugely beneficial effect on both parties and again, makes a direct and significant contribution to your profitability.

ENVIRONMENTAL AWARENESS

Technique can improve your 'green' credentials by reducing the wastage of paper and energy in your business. A positive effect of using our Inventory Management System is the immediate and dramatic reduction in paper waste - often by as much as 75% - simply by using our software.

LOOK! NO WIRES

The entire life cycle of every sheet and every roll is tracked through Technique MIS. From estimate to job, from purchase to receipt, from inventory to the press, from finished product to dispatch, we monitor it all the way. Wireless barcode scanners simplify the process, reduce administration and provide a real-time view of all materials.





Get in touch



Our dedicated team of specialists are available to provide demonstrations or answer any questions you may have regarding our MIS solutions.

TECHNIQUE OFFICES

Europe/Global (Leeds)

Technique Group
Turing House
Millshaw
Leeds
LS11 8LZ
United Kingdom

Telephone: +44 (0)113 383 6000

Americas (Chicago)

Technique Inc.
10 North Martingale Road
Suite 400
Schaumburg
IL 60173
USA

Telephone: +1-888-532-6647

Australasia (Sydney)

Technique Inc.
Level 34
AMP Centre
50 Bridge Street
Sydney
NSW 2000
Australia

Telephone: +61 (0)2 8216 0795

TECHNIQUE AGENTS

Gulf Region (Dubai)

Giffin Graphics
PO Box 3479
Sharjah
Dubai
United Arab Emirates

Telephone: +971 6 5320671

Iberia (Oviedo)

Dana Software Informática
V́ctor Chávarri, 23
33001 Oviedo
Asturias
Spain

Telephone: +34 985 21 41 27

TECHNIQUE > MIS

technique-mis.com



Follow us on Twitter @techniquemis



MIS APPS 2011/US English